

Historic, Archive Document

Do not assume content reflects current scientific knowledge, policies, or practices.



1945

A New Strawberry

LIBRARY
RECEIVED
from
★ FEB 9 1945 ★
U.S. Department of Agriculture

Charlie's Place

(CHAS. BRUNES)

PEQUOT LAKES, MINNESOTA



Where thousands of quarts of berries are sold each season to our tourist trade. Chas. Brunès of Charlie's Place, Highway 371, Pequot Lakes, Minn.



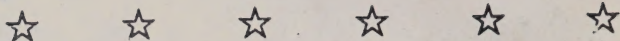
HOME OF

"Brunes Marvel"

STRAWBERRIES

Large . . Sweet . . Lucious
Early . . Hardy . . Prolific
Lots of Runners

The Everbearer You Want



Eat All You Want of "Brunes Marvel"

Seven years ago I began experimenting to see if it were possible to get an everbearing strawberry as large as the Gem or Mastadon and as sweet as the Wayzata, one that would set runners freely. Today we have several acres of such a berry.

The Berries Are Large

Yes, they are as large as the Wayzata and Gem and ripen even all through the berry, no green tips or part green and part ripe.

Early Ripening

The first berry to get ripe on our place, and goes to work about 60 days after setting out plants.

It doesn't take long to stem a quart of "Brunes Marvel" as they are free-stem; no core left in the berry. Think what this means to the busy housewife getting berries ready to serve.

Sweetness

Saving of sugar in canning and serving, they take only $\frac{1}{2}$ the sugar for canning, which is a big saving.

Keeping Qualities

Far ahead of other everbearers we have raised.

Stand Dry Weather Better

They go down for moisture as roots are exceptionally long. Some of them have measured 17 inches.

Heavy Foliage for Protection

Foliage is heavy enough on our new berry that it helps protect the berries against sunscald and frost.



The "Brunes Marvel" Is Different

Often we have our customers come up to our berry stand and say, "Wish I could eat strawberries." We ask them to try our new berry, and those that do come for more and say, "these berries don't cause me any pain!" We have several of our tourist customers who haven't been able to eat strawberries for years. Queer as it seems, they can eat their fill of the "Brunes Marvel" without distress.

Less Acid . . . Sweeter . . . They Need

☆ ☆ ☆ ☆ ☆

“Brunes Marvel” Strawberries

To Whom It May Concern:

For years I have been unable to eat any strawberries because the acid in them caused pain and much distress. Last summer (1940) Mr. Chas. Bruner of Pequot Lakes, Minn., asked me to sample a strawberry he had himself produced from seed. Very much to my surprise and delight I found this particular berry agreed with me and since then I have eaten all I wanted without distress. The berry Mr. Bruner has developed is a large sweet strawberry, everbearing, and is almost or entirely free from acid, and I highly recommend it.

MRS. E. M. KENNEY,

(Summer address:
Pequot Lakes, Minn.)

1822 6th Ave.,
Des Moines, Ia.

Preferred by Customers

We have raised all the leading everbearers and have sold thousands of quarts of all varieties each season to our tourist trade at our roadside stand here at Pequot Lakes. We now raise only the “Brunes Marvel” as our customers prefer them to other varieties. I am still trying to raise other new strawberries and have several very promising plants in our testing rows.

Our Third Season With “Brunes Marvels”

This is the third season we are offering this new berry plant for sale, and it has been sold by us and shipped to 27 States and Canada so far. It is the hardiest plant of any strawberry we have raised.

A Limited Quantity

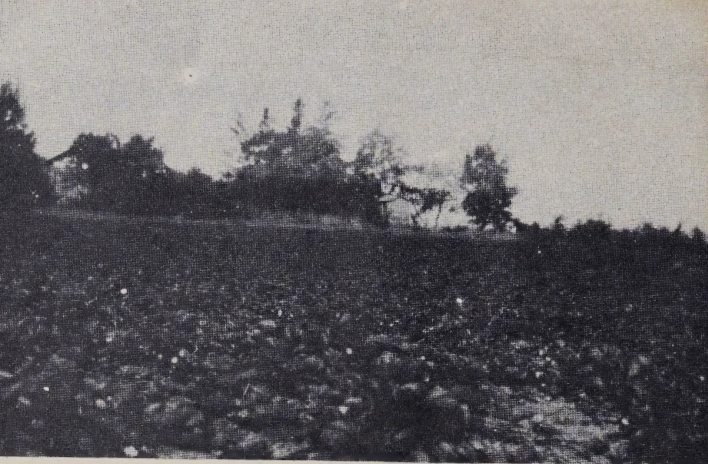
We have a nice lot of “Brunes Marvel” plants this year but the demand for them is greater now, so please order early. We reserve the right to return your money when plants are sold out.

It is usually April 15 before we can dig plants here.

Growing Instructions

Plant strawberries as early in the spring at the ground can be worked. Start cultivating and hoeing as soon as planted. Cultivate all summer and keep weeds out. If possible water them in EVENING in dry weather. Have rows 3 to 4 feet apart and plant 18 to 20 inches apart in the row. Keep bud clusters picked off from 6 to 7 weeks after planting, then let them bear the rest of the summer.

Less Sugar for Eating Fresh and Canning



Part of a Patch of "Brunes Marvels"

**PRICES ON "BRUNES MARVEL"
PLANTS**

| | | |
|------------|-------|------------------|
| 50 or less | ----- | 10c each |
| 75 plants | ----- | 8c each |
| 100 to 500 | ----- | \$7.00 per 100 |
| | | \$50.00 per 1000 |

One-third cash with order

★ ★

Care of Plants

When plants arrive cut the string around plants, dip roots in water and heel them in the ground until you are ready to set them out. Sandy loam is best for strawberries, but reports have come to us that "Brunes Marvel" is doing well on a variety of soils in several states.

★ ★

GUARANTEE

We guarantee every plant sold by us to be first class in every respect, free from any injurious diseases or insects and true to name, and will replace any plants that are otherwise. It is agreed between ourselves and our customers that we shall not be liable for a greater sum than the amount paid us for plants, and will not be responsible for crop failure or damage by weather, etc. We reserve the right to return money in case of shortage of plants.

Reference:

Farmers State Bank, Pequot Lakes, Minn.

Chas. Bruner

Pequot Lakes

Minnesota